

PIPE & WALL INSPECTION SYSTEMS

MODEL NO.: CR110-7D

ASSEMBLY AND OPERATING INSTRUCTION



Read these instructions completely before operating this system

Specifications

Item	Description
Power adapter	110VAC~240VAC 12VDC1800mA
Battery Case	Sealed, Lead Acid
Length of Cable	20 <input type="checkbox"/> 30 <input type="checkbox"/> 40 <input type="checkbox"/> meter
Camera Light Source	Built-in White LED
Camera Angle-of-View	60° (horizontal), 60° (vertical)
Camera Depth-of-View	400 mm (approximate)
Camera Image	Color
Monitor Image	Color
Monitor Picture Resolution	320 (TV Lines)
Monitor Input Voltage	12 Volts DC
System Operating Temperature	-28°C to 50°C

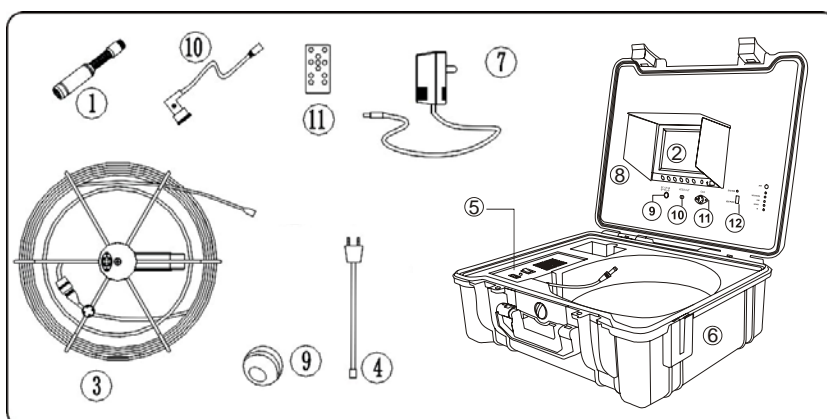
Save this Manual

Attention

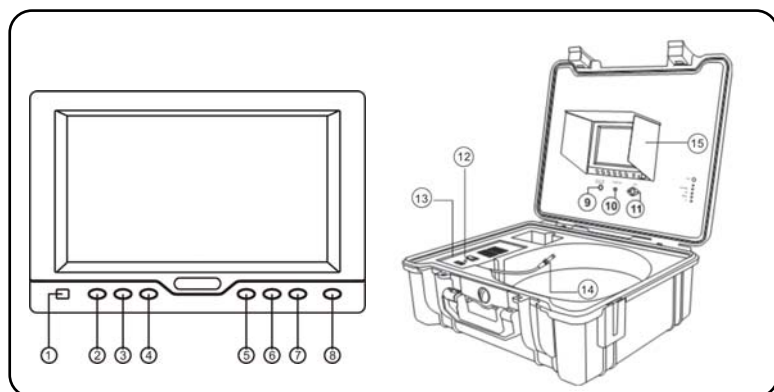
1. Read the user manual carefully before using this system.
2. Avoid using the device in extremely cold, heat, or humidity environment, it may damage the device.
3. Do not drop or press hard on the device.
4. Warranty invalidation if the device is disconnected by users or has any physical damages.

Assembly drawing and parts list

Part No.	Description
1	CAMERA
2	MONITOR
3	20 <input type="checkbox"/> 30 <input type="checkbox"/> 40 <input type="checkbox"/> meter CABLE WITH WHEEL (LONG)
4	AC CORD
5	BATTERY CASE
6	BIG CASE
7	DC 12V POWER SUPPLY
8	SUNSHADE
9	BALL PROTECTION
10	SOFT CABLE (SHORT)
11	REMOTE CONTROL



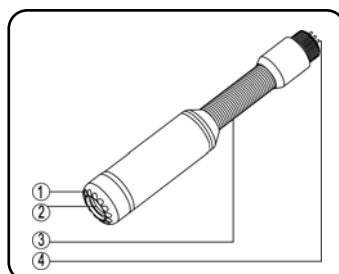
Know Your Tool



- | | |
|---------------------|---------------------------|
| 1. RECEIVING WINDOW | 9. DC 12V IN |
| 2. AV1/AV2 SWITCH | 10. VIDEO OUT |
| 3. MODE SWITCH | 11. CAMERA PORT |
| 4. LED CONTROL | 12. POWER & CHARGE SWITCH |
| 5. MENU | 13. AC INPUT PORT |
| 6. ADJUSTMENT KEY- | 14. DC 12V OUTPUT CORD |
| 7. ADJUSTMENT KEY+ | 15. SUN VISOR |
| 8. POWER | |

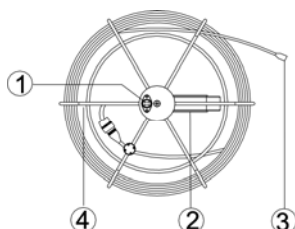
Camera

1. WHITE LEDS
2. LENS
3. SPRING
4. GOLD CONNECTER



Cable wheel

1. MALE PLUG (TO MONITOR)
2. HANDLE
3. CABLE CONNECTER (TO CAMERA)
4. CABLE WHEEL



System Set-Up

1. **IMPORTANT: When connecting the Camera to the Monitor the power must be off or both units will be damaged.**
2. Screw the Camera to the Wheel Cable (See Figure1- A) & Connect the Wheel to the Monitor (See Figure 1-B).
3. Plug the Power Adapter cord into the wall AC socket and other end into the DC 12V-Input Jack, or plug the cord from the Battery Box into the DC 12V-Input Jack (See Figure1- C). If use the Battery Case Power, plug the Power Cord of Battery Case into the DC 12V-Input Jack.
4. Turn on the **POWER** Switch on the front of the Monitor.
5. Gently lower the Camera into a pipe duct, etc and reel out the Cable until it is at the desired depth.
6. Turn on the **LED** Button & adjust the Brightness from the MENU.
7. When finish, carefully remove the Camera from the pipe duct, etc. Screw out the Camera and clean it with a clean, soft and dry cloth then put the Camera into the previous position.

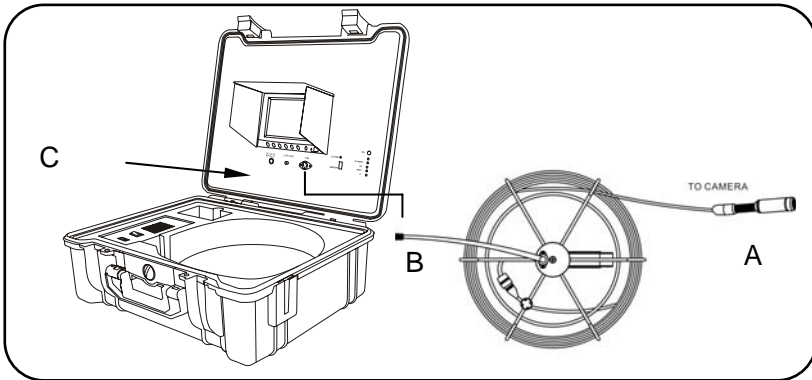


Figure 1

Recharge

- 1) Plug the AC cord into wall AC socket & insert the other end into the Battery Box AC jack (See Figure2- A)
- 2) Press down the charge switch (See Figure2-B)
- 3) Charge LED will be Red during charging & turn to be Green when finish charging (normally charging time 8 - 10 hours).

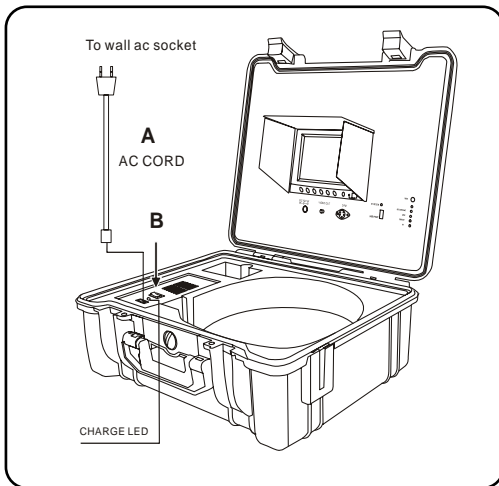


Figure 2

Do not overcharge the battery! Overcharging can result in damage to or acid leaking from the battery.

Application

WITH MINI-CAMERA FOR PIPE DIAMETER FROM 25MM TO 120MM ID

1. WATER SUPPLY
2. WASTE WATER
3. ELECTRICAL AIR CONDITIONER
4. CABLE DUCTING
5. DUCTED VACCUM SYSTEMS
6. PLUMBING
7. IN BUILDING